

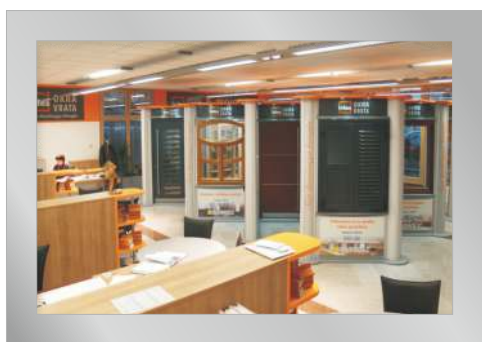


WOOD AND WOOD/ALUMINIUM ENTRANCE DOORS



Custom wood windows and doors -

- ❑ Inles d.d. is a manufacturer of windows and doors with 70 years of experience.
- ❑ The legacy of Inles quality is built on hundreds of years of tradition in crafting woods.
- ❑ Inles products are known for quality and durability all over Europe. We are also known under the trade mark ISARHOLZ.
- ❑ Carefully selected materials and a technologically advanced manufacturing facility guarantee outstanding products for safety, durability, design and comfort.





☐ Inles offers only the highest quality windows and doors. We are recognized throughout the world. Most of our products we sell in the EU market and the markets of Asiaa, Africa, north and south America.

☐ We offer a variety of materials: wood, vinyl, aluminum or any combination of wood/aluminium, pvc/aluminium that will enhance the appearance and quality of your home.

☐ With Inles you can choose the materials to satisfy your taste.

- Quality and advanced technology for all architectural requirements.



Wood and wood/alu doors



WOOD & WOOD/ALU DOORS

Entrance doors are your visitors' first contact with your home and people often say they are a mirror of your home. All Inles entrance doors are produced and designed with exceptional attention to detail. They will keep your home warm and protect you from unwanted visitors.

Series
**TREND ALPHA, TREND,
DELUXE, MODERN**
WOOD AND WOOD/ALU DOORS

Series
**TREND RUSTICO, TREND LINE,
TREND HBF, TREND NOVO,
KLASSICO ETA, KLASSICO, ANTICO,
RUSTICO, NEOKLASSICO,
LOW-ENERGIE & PASSIV**
WOOD DOORS

WOOD AND WOOD/ALU DOORS (80&68)

TREND ALPHA & TREND

TREND ALPHA & TREND

Combined with an application of alu or stainless steel, which is flush with the door surface, the artificial and the natural material are connected into one whole. A wide range of colours and accessories gives a free hand to your creativity with the doors.

The TREND ALPHA 80 door series in flush execution creates special aesthetics for your entrance.



HT 909 / HSTT 400



HTA 264



HT 100, Altholz oak, RGI



HT 264A / HSTT 400



HT 862A / HSTT 400



HT 863A / HSTT 400



HT 867 / HSTT 400



HT 887A / HSTT 400

WOOD DOORS (68/95)

TREND RUSTICO

TREND RUSTICO

This collection shows the natural wood oak with his most valuable and natural sort. Creative are the glass combinations, handles and applications.

NEW wooden door Trend Rustico frame with aluminum shell.



HTR 106A



HTR 105



HTR 107



HTR 102A



HTR 103



HTR 103A



HTR 106B / HSTT 400
with aluminum coating on the outside of the frame

WOOD DOORS (68)

TREND LINE

TREND LINE

The base of the door, frame and wing is available in any colors and tree species: spruce, pine, larch, oak and meranti.

On the outer side the wings are made of solid battens aligned with the door frame to crate a 3D look of larch or oak wood. The surface of the battens is only possible as oiled.



HTL 103



HTL 268



HTL 100 / HSTT 400



HTL 272



HTL 269



HTL 105



HTL 270

WOOD DOORS (68)

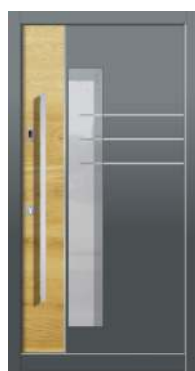
TREND HBF

TREND HBF

The combination of rustikal and modern look/design gives this collection a whole special charm and creative effect.



HBF 906



HBF 919A



HBF 894



HBF 911A / HSTT 400



HBF 266B



HBF 123



HBF 845 / HSTT400

LOW-ENERGIE (68/95) & PASSIV DOORS (98)

LOW-ENERGY WOODEN DOORS

Wooden entrance doors made of Ferro Klassikplus rolling, 95 mm thick, achieve excellent thermal permeability of the door, $U_d = 0.67 \text{ Wm}^2/\text{K}$. All door models from the Modern series are also available in this version.

H 68/95

**LOW
ENERGIE**

HT 100
FERRO KLASSIKPLUS

68/95	$U_d \text{ (Wm}^2/\text{K)}$
H	0,67*

Explanation
* applies to soft woods,
for door dimensions 1100 x 2100 mm
and a leaf without a glass cutout.



HT 100

PASSIV WOODEN DOORS

Certified wooden doors made of rolling of 98 mm thickness are suitable for low-energy and passive buildings.

$U_d = 0,80 \text{ W/m}^2\text{K}$

H 98 PASSIVE

HT 264
FERRO PASSIV



WOOD AND WOOD/ALU DOORS (68)

DELUXE/ MODERN

Selection of door models.



HD 945 / HSTT 400



HD 875C



HD 801A / HSTT 400



HD 852A



HD 168



HM 134B



HM 180



HM 133A



HM 875C



HM 170

WOOD DOORS (80)

TREND NOVO

TREND NOVO

Wooden entrance door with a glazing batten on the outside and inside.

The TREND NOVO 80 door series in flush execution creates special aesthetics for your entrance.



HTN 104



HTN 102



HTN 102



HTN 103



HTN 101



HTN 103

WOOD DOORS (80)

CLASSICO ETA

KLASSICO ETA

Wooden entrance door made of solid wood with a glazing batten on the outside and inside.

The CLASSICO ETA door series in flush execution creates special aesthetics for your entrance.



HCKE 401



HCKE 400



HCKE 402



HCKE 401P



HCKE 407



HCGE 051

WOOD DOORS (68)

KLASSICO/ NEOKLASSICO

Selection of door models.



HCK 424/ HSTC 400



HCK 419/ OL 101



HCK 400



HCK 413/ HSTC 413A



HCK 418



HCN 708



HCN 714



HCN 739



HCN 721



HCN 709

WOOD DOORS (68)

ANTICO/ RUSTICO

Selection of door models.



*HCA 611



HCA 610



*HCA 612



HCA 607



HCA 603
glass SG 317

Explanation:
models *HCA 611 and *HCA 612
are only available in shades RGI, RIÖI,
REÖI, RF200, RL200, RE200
and in all covering RAL colors.



HCR 545



HCR 503



HCR 535;
glass SG 316



HCR 517



HCR 514

WOOD

- ☐ You can choose from the following species of wood: spruce, pine, larch, oak and meranti.
- ☐ The wood meets the RAL quality requirements according to EN 942
- ☐ The moisture content of the wood is controlled and amounts to 13 +/- 2%.
- ☐ Wood is stored in regulated air humidity warehouse, which prevents cracking and other defects related to inadequate moisture content in the wood.



WOOD PROFILES

- ☐ Wood frame and leaf profiles with a thickness of 68, 80 mm.
- ☐ The profiles are three layers of wood joined together using waterresistant D4 adhesive according to the EN 204 and EN 14257 standards.
- ☐ The mullion of the door leaves of the CLASSIC range include aluminium and steel stabilisers to prevent the leaf bending.

HARDWARE

- ☐ Quality three-dimensional adjustable standard Baka PROTECT 4010 3D FD hinges (HH 68) and concealed hinges Tectus TE 540 3D (HH80).
- ☐ 3 or 5-point locking of the leaf.
- ☐ Various options for opening: outside opening, a fingerprint system, electrical opening etc.



GLAZING

- ☐ You can choose from a variety of thermal and acoustic insulated and safety glass.
- ☐ A wide selection of ornaments and vitrages according to your wishes.
- ☐ Finishing the glass with various foils, glass accessories, sandblasting etc.

SURFACE TREATMENT

- ☐ You will surely find a colour shade to your taste from our wide range of various coatings.
- ☐ Optional two-coloured version.





VIEW FROM OUTSIDE



VIEW FROM THE INSIDE



Opening the door
with dLine Fingerprint



Handle with an integrated
Fingerprint reader
dLine



Handle with an integrated
LED light

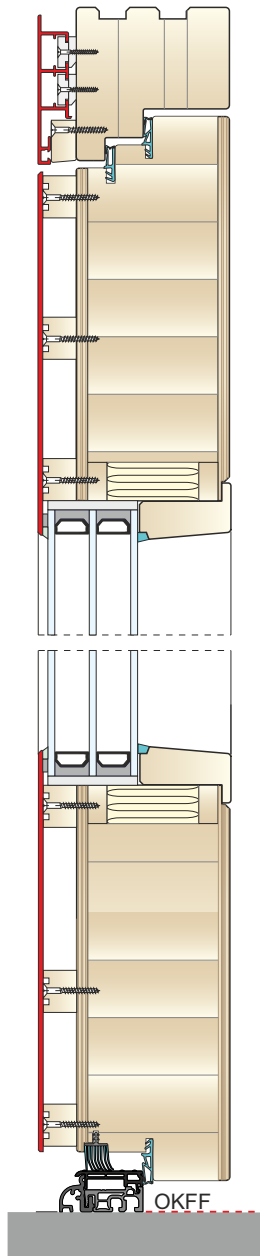


LED light

WOOD/ALUMINIUM ENTRANCE DOORS INO-HAH

with aluminum cladding

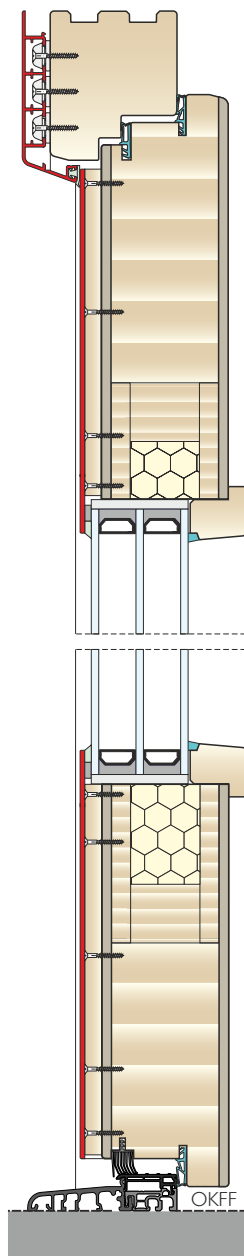
thickness 80 mm



Series TREND ALPHA

with aluminum cladding

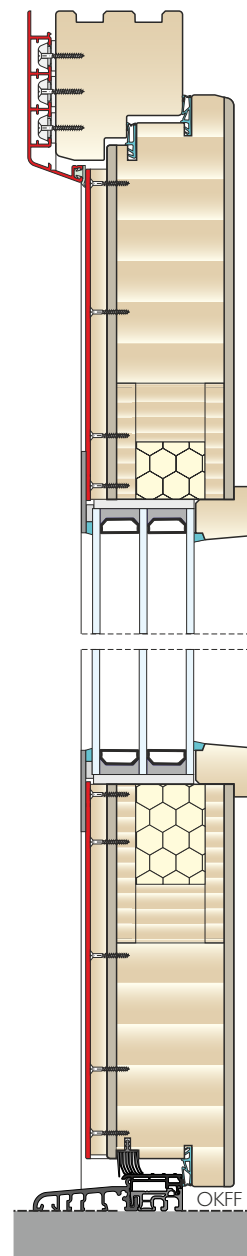
thickness 68 mm



Series TREND MODERN

with aluminum cladding

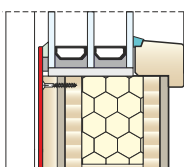
thickness 68 mm



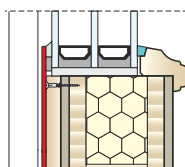
Series DELUXE

Wood thickness 68 mm

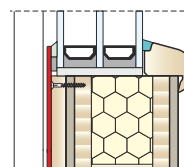
STANDARD VERSION
ANGULAR EDGES glazing bar



ADDITIONAL OFFER
PROFILED EDGES glazing bar



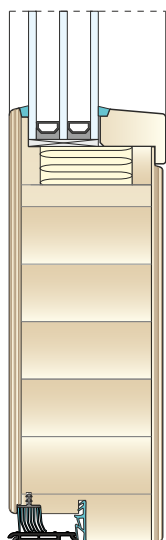
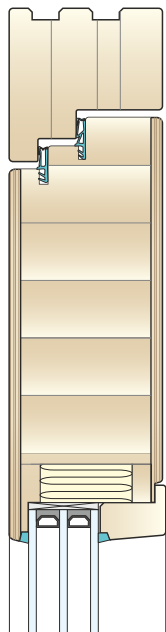
ADDITIONAL OFFER
ROUNDED EDGES glazing bar



WOOD ENTRANCE DOORS **INO-HH**

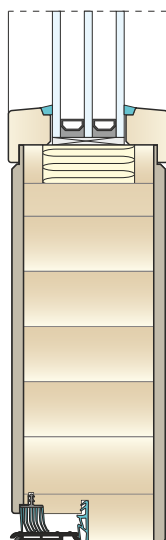
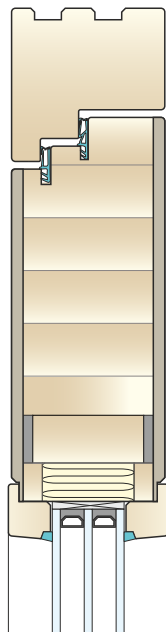
Frame with aluminum cladding

thickness 80/ 80 mm



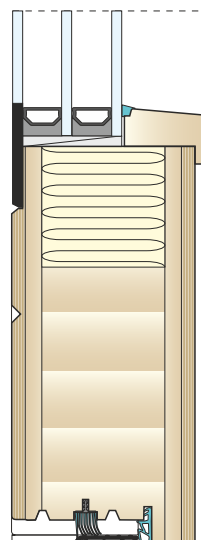
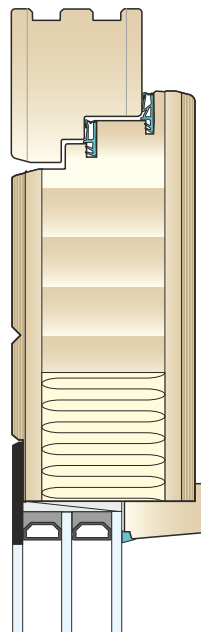
OKFF

thickness 80/ 80 mm



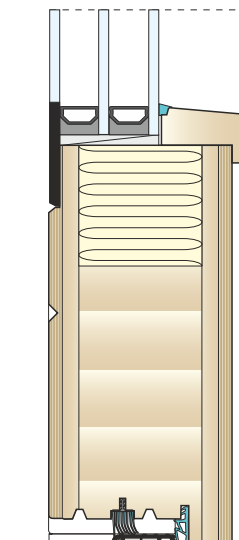
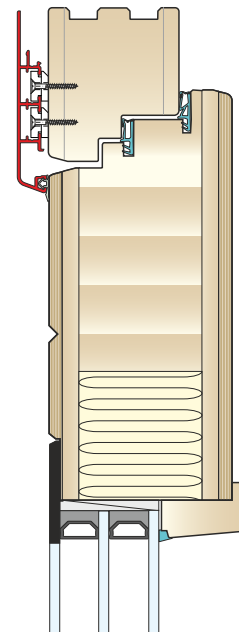
OKFF

thickness 68/ 95 mm



OKFF

wood- thickness 68/ 95 mm



OKFF

Series **TREND ALPHA**

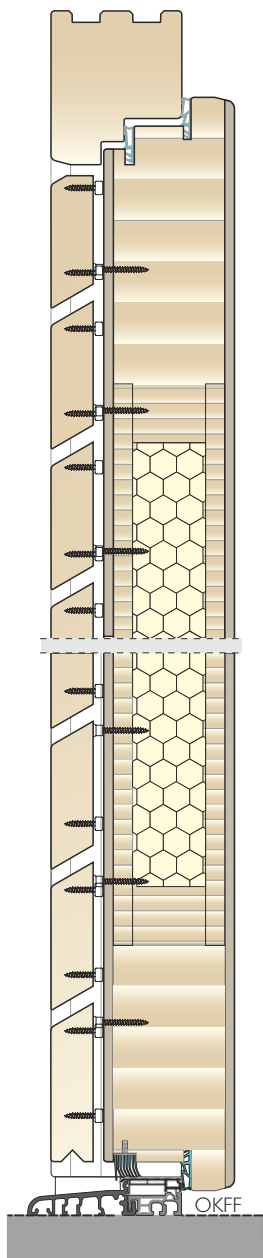
Series **TREND NOVO**

Series **TREND RUSTICO**

Series **TREND RUSTICO**

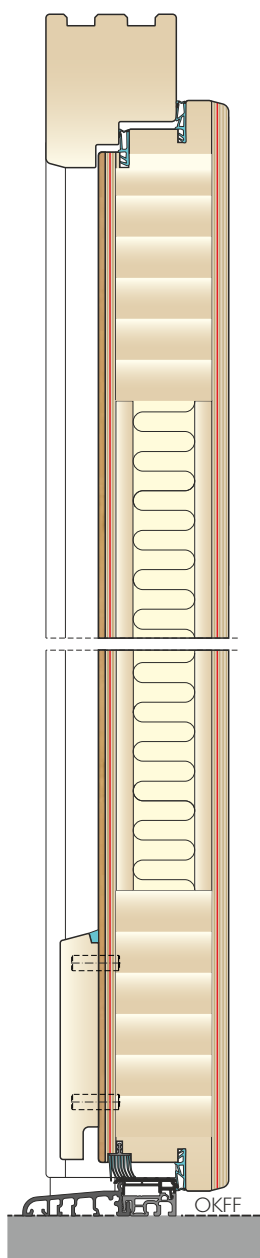
WOOD ENTRANCE DOORS **INO-HH**

thickness 68/ 68-95 mm



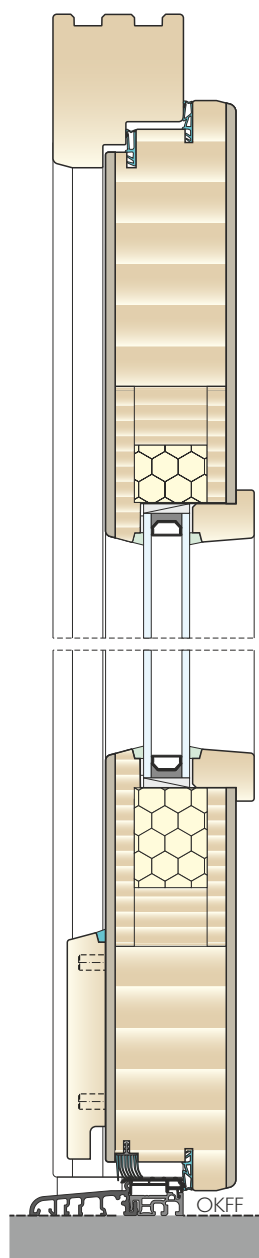
Series **TREND LINE**

thickness 68/ 68 mm



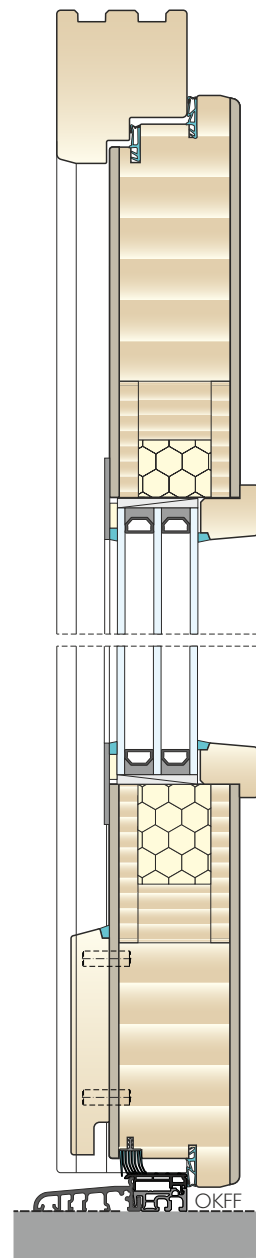
Series **TREND HBF**

thickness 68/ 68 mm



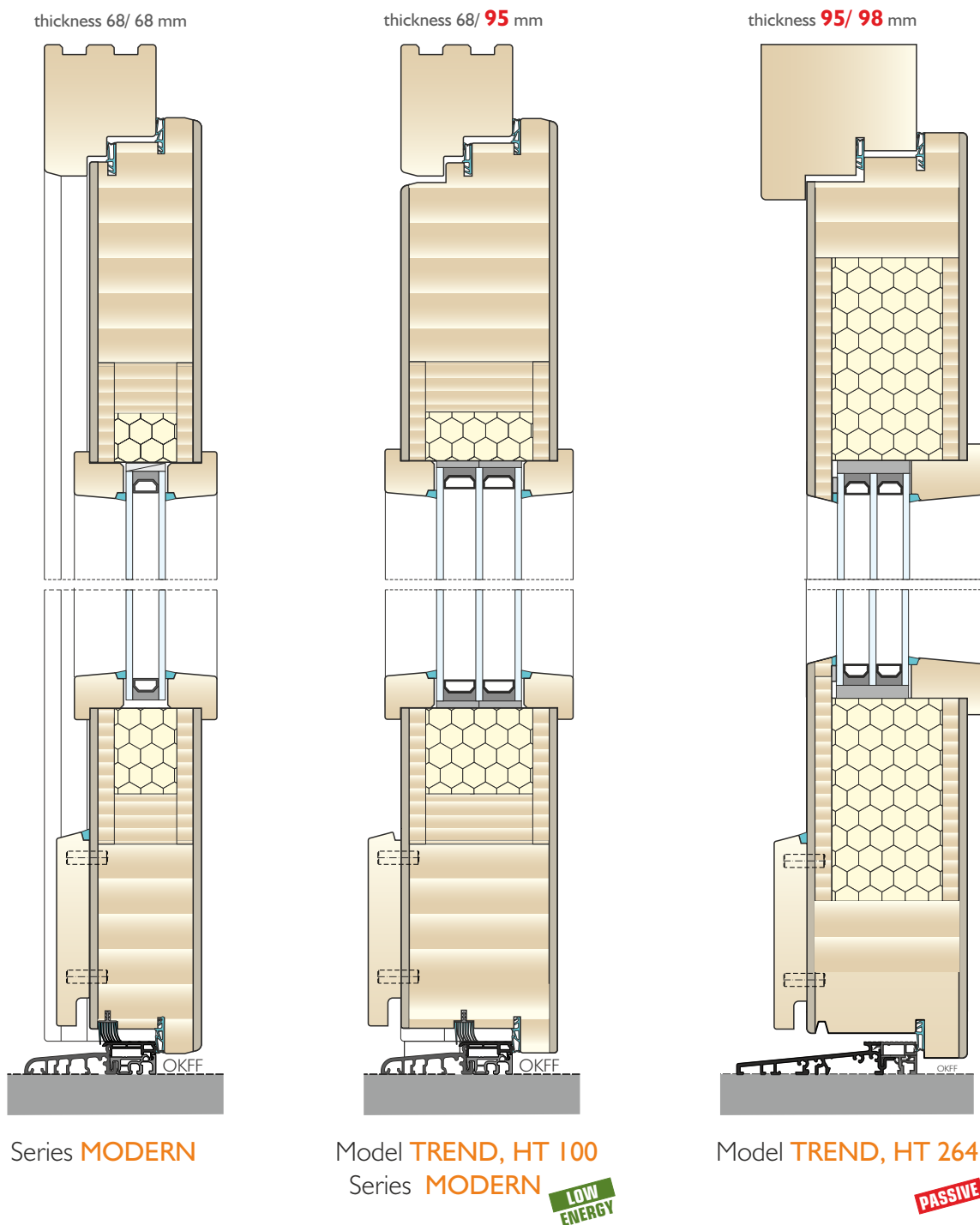
Series **TREND**

thickness 68/ 68 mm

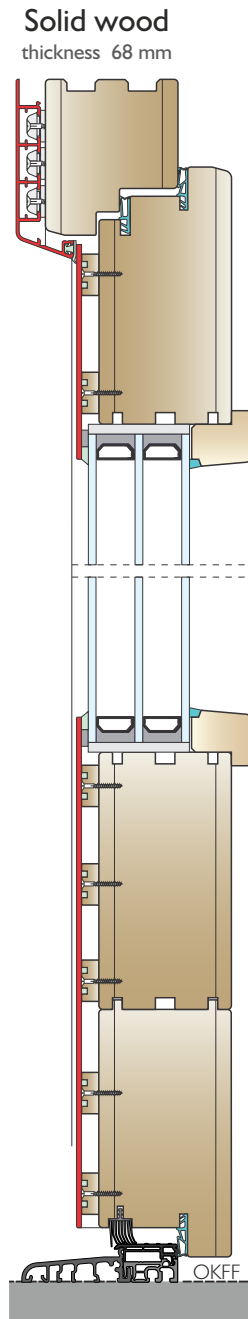


Series **DELUXE**

WOOD ENTRANCE DOORS **INO-HH**

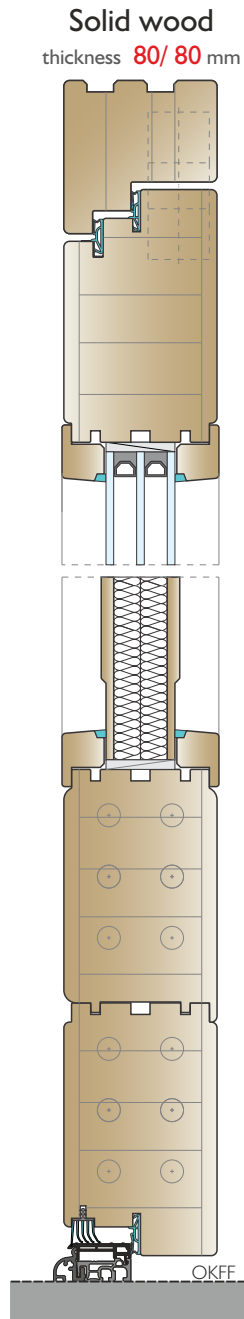


WOOD/ALUMINIUM ENTRANCE DOORS **INO-HAH**

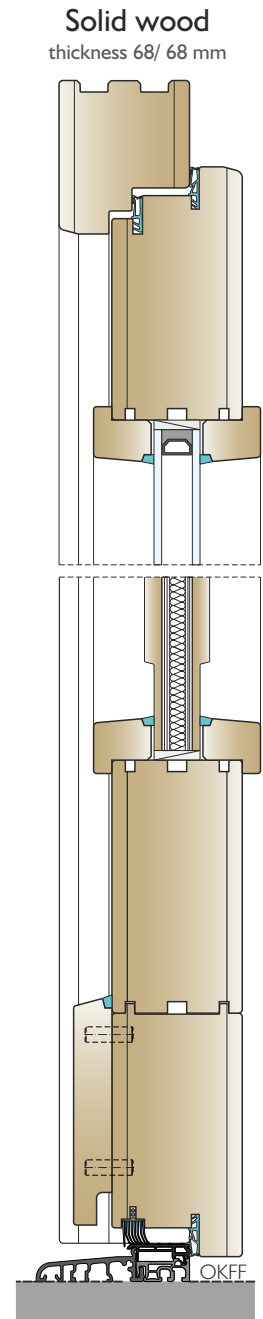


Series **KLASSICO**
(Due to technical reasons not
all models are available.)

WOOD ENTRANCE DOORS **INO-HH**



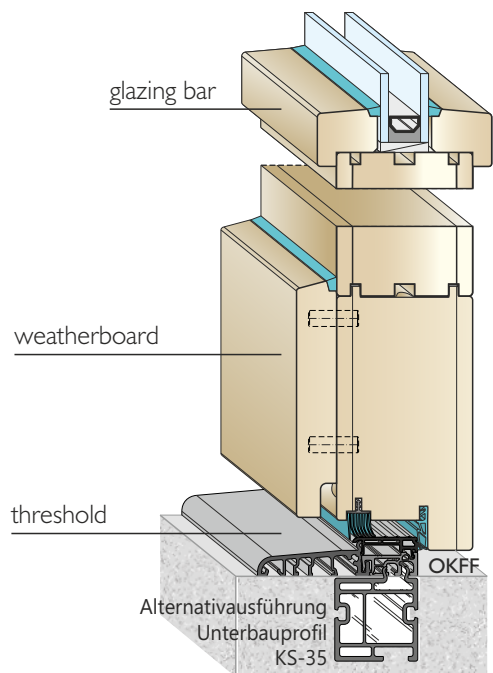
Series **KLASSICO ETA**



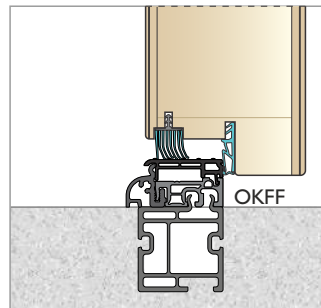
Series **ANTICO,
RUSTICO, KLASSICO,
NEOKLASSICO**

WOOD ENTRANCE DOORS **INO-HH**

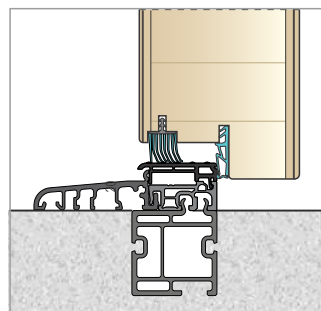
STANDARD VERSION
ANGULAR EDGES
(glazing bar, weatherboard)
BKV 80 TB threshold



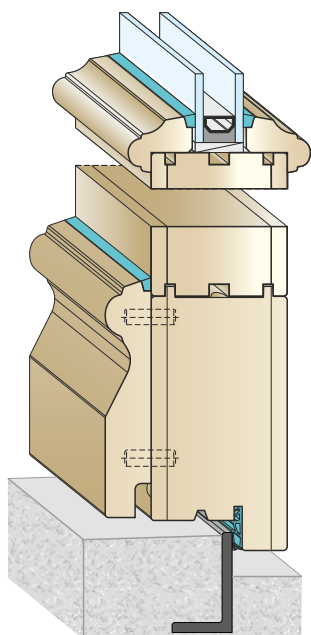
STANDARD VERSION **HH 80**
BKV 40 TB threshold



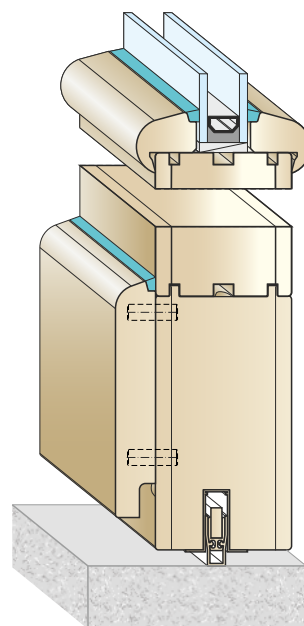
ADDITIONAL OFFER **HH 80**
BKV 80 TB threshold



ADDITIONAL OFFER
(glazing bar, weatherboard)
AV-02 threshold

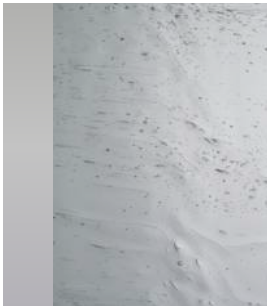


ADDITIONAL OFFER
(glazing bar, weatherboard)
AV-07 threshold



GLAZING

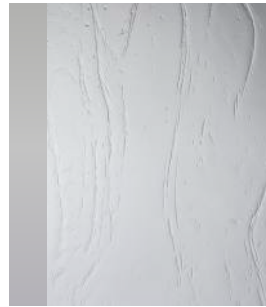
Ornamental glass



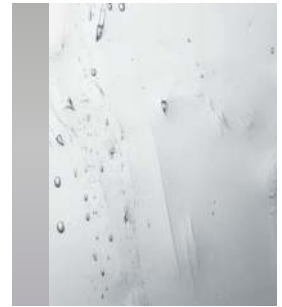
Altd Deutsch white



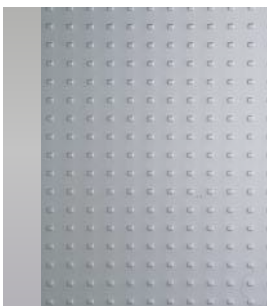
Chinchilla white



Gothic white



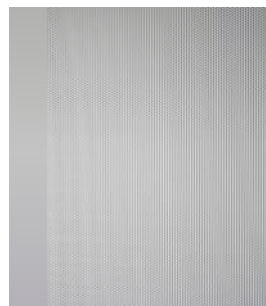
Altd Deutsch K white



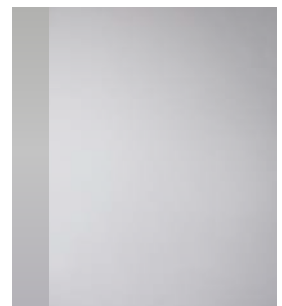
Mastercarre white



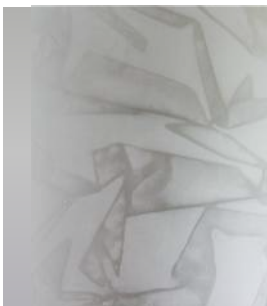
Masterligne white



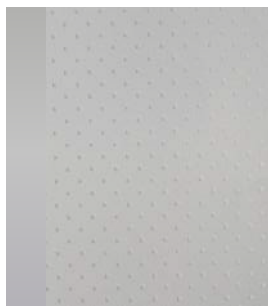
Masterpoint white



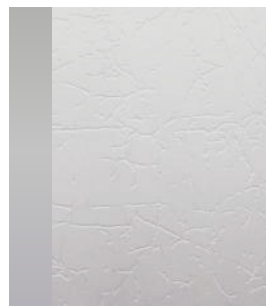
Satinato white



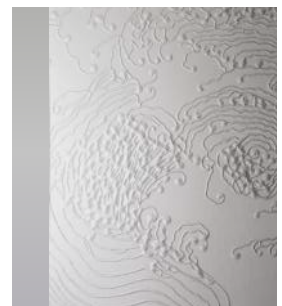
Silk white



Pave white

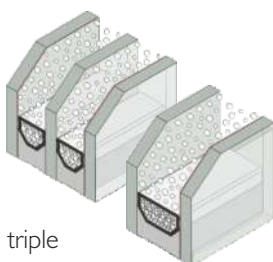


Uadi white



Nebulosa white

THERMAL INSULATING GLASS



triple



twice

SANDBLASTED GLASS



SANDBLASTED GLASS WITH APPLICATIONS



STAINED GLASS





316 205 316 213 316 214



316 878 316 890 316 890



319 062 (68) 316 212 316 211
316 207 (80)



381 181
89 X 74 mm



381 180
89 X 74 mm



316 254 (L)
316 255 (R)



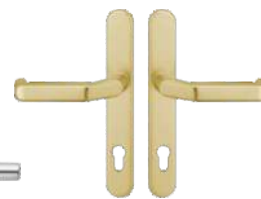
319 567



314 866



314 839



316 242



316 894 (L)
316 895 (R)

COLOUR CHART OF WOOD SURFACES

For wood and wood/aluminium windows and doors

The following wood species are available



spruce



pine



larch



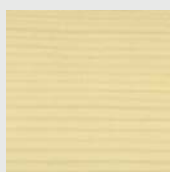
oak



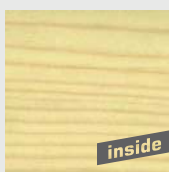
meranti

Glazes (visible wood species structure)

Spruce/pine



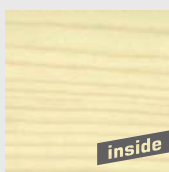
RF 200



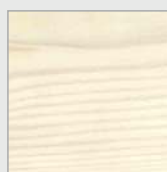
RFI ÖI ▼



RFI NE



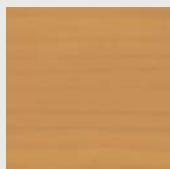
RFI I



RF/K 10



RFI 10



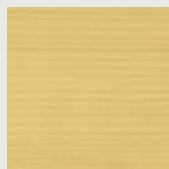
RF/K 11



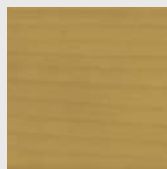
RF/K 12



RF/K 19



RF/K 21



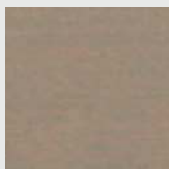
RF/K 22



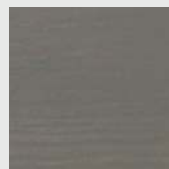
RF/K 15 ✱



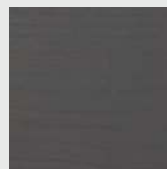
RF/K 16 ✱



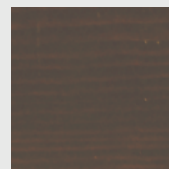
RF/K 17 ✱



RF/K 26 ✱

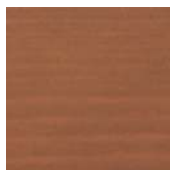


RF/K 27



RF/K 25

Pine



RK 1 ✱



RK 2 ✱



RK 4 ✱

Basic

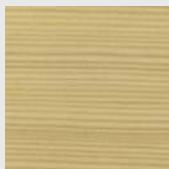


RG 1

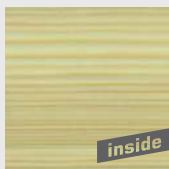
Larch



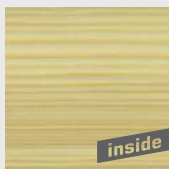
RL 200



RL ÖI ▼



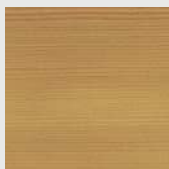
RLI NE



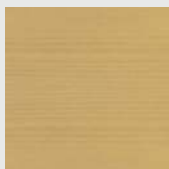
RLI I



RL 21



RL 22



RL 23

ENVIRONMENTALLY-FRIENDLY
We use environmentally-friendly
Water-based coatings for our
three-layered system of
surface treatment.

Oak



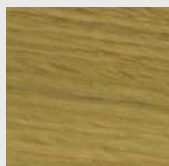
ALTHOLZ

NEW

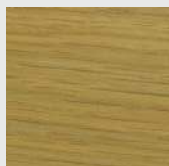
ALTHOLZ WOOD DECOR

Available for two models: HT 100, HTA 100

Surface treatment: raw, oiled or basic



RE 200



RE Ö1 ▼



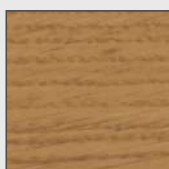
REI NE



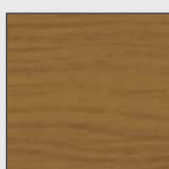
REI I



REI 10



RE 21



RE 22

Meranti



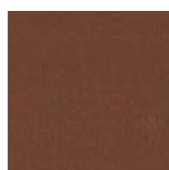
RM 21



RM 22



RM 23



RM 24



RM 25



RM 30

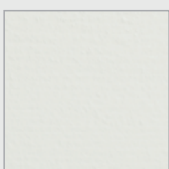


RM 31



RM 32

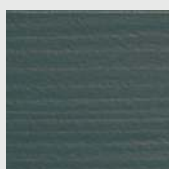
According to the RAL colour chart



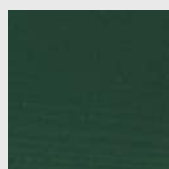
R D 21



R D 22



R D 25



R D 44

NOTE:

▼ **OILED SURFACE** On the surface treated with oil we make no guarantees. The products like this requires at least 2x annual coating with a suitable oil, which you can buy from us.

✱ **COLORS RF/K 15, RF/K 16, RF/K 17, RF/K 26 and RK 1, RK 2, RK 4**

This shade strongly emphasizes the wood grain and is therefore more sensitive to possible color deviations, different hues and staining, which can occur due to different wood structures, restored resin bales and other manufacturing-related characteristics. Wood is a natural product, so after such a surface treatment with a more pigmented primer, the different absorption of the wood due to its unique shape and structure creates a playful combination of colours. This does not mean a reduction in the quality of the natural product wood nor that such colour differences can be a reason for a complaint about wood products.

COLOUR CHART OF ALUMINUM SURFACES, HANDLES

Colours of aluminium for wood and wood/aluminium windows and doors

MASTER COLLECTION (feinstruktur, metallic)



Night Grey
Feinstruktur Metallic



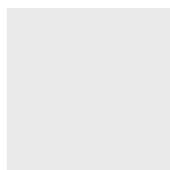
Cast Iron
Feinstruktur Metallic



Russet Copper
Feinstruktur Metallic



Brown
Feinstruktur Metallic



Artic Ice
Feinstruktur Metallic



Granit Nature
Feinstruktur Metallic

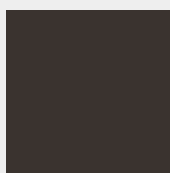


Volcanic Ash
Feinstruktur Metallic

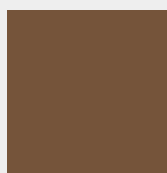


Precious Sand
Feinstruktur Metallic

ANODIZING COLLECTION (matt, metallic)



CARBON NIGHT
Matt Metallic



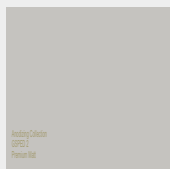
DARK COPPER
Matt Metallic



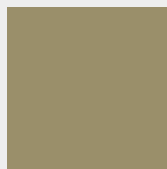
SIMPLY COPPER
Matt Metallic



ORIGINAL PLATINIUM
Matt Metallic



GSPED 0
Matt



GSPED 1
Matt

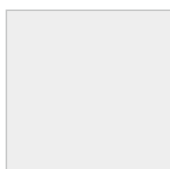


GSPED 4
Matt

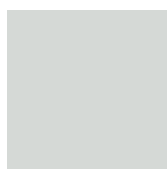


NOBLE BRONZE
Matt Metallic

RAL FARBEN (matt, feinstruktur, metallic, glatt)



RAL 9016
Matt/ Feinstruktur



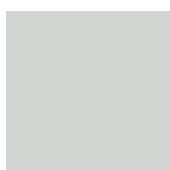
RAL 7035
Matt/ Feinstruktur



RAL 7004
Matt/ Feinstruktur



RAL 7016
Matt/ Feinstruktur



RAL 9006
Metallic glatt



RAL 9007
Metallic glatt

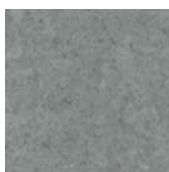


DB 703
Metallic glatt

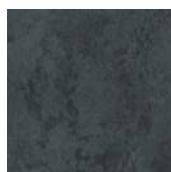


DB 703
Metallic Feinstruktur

Imitation in stone



Dekor Zement hell



Dekor Beton dunkel

New

Imitation in wood



Dekor Altholz
(Stadelholz-1N)

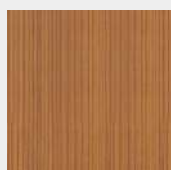


Dekor Stadelholz grau

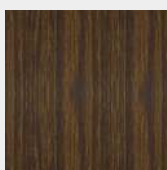
New

GS Stemeseder Imitation wood

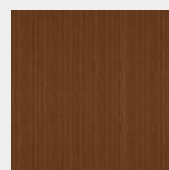
IMITATION IN WOOD



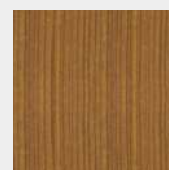
Douglas 7



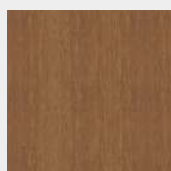
Eiche dunkel



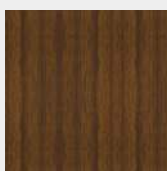
Kirsch 2



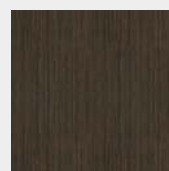
Kirsch 3



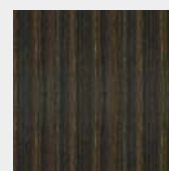
Golden Oak



Nuss I



Wenge



Walnuss dunkel



Inles

Proizvodnja, trženje in inženiring d.d.

SI - 1310 Ribnica, Kolodvorska 22
tel.: 01 8377 100, fax: 01 8377 333
e-mail: info@inles.si

www.inles.net

DISTRIBUTOR

