

The following wood species are available



spruce



pine



larch

COLOUR CHART OF WOOD SURFACES

Glazes (visible wood species structure)

Spruce/ pine



RF 200



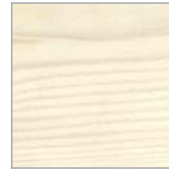
RFI Ö1 ▼



RFI NE



RFI I



RF/K 10



RFI 10



RF/K 11



RF/K 12



RF/K 19



RF/K 21



RF/K 22



RF/K 15 *



RF/K 16 *



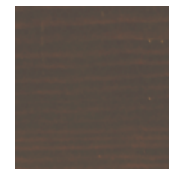
RF/K 17 *



RF/K 26 *



RF/K 27



RF/K 25

Pine



RK 1 *



RK 2 *



RK 4 *

Basic



RG 1

Larch



RL 200



RL Ö1 ▼



RLI NE



RLI I



RL 21



RL 22

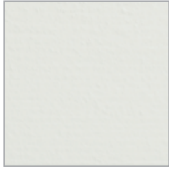


RL 23

ENVIRONMENTALLY-FRIENDLY

We use environmentally-friendly
Water-based coatings for our
three-layered system of
surface treatment.

According to the RAL colour chart



RD 21



RD 22



RD 25



RD 44

NOTE:

▼ **OILED SURFACE** On the surface treated with oil we make no guarantees. The products like this requires at least 2x annual coating with a suitable oil, which you can buy from us.

⚙️ **COLORS RF/K 15, RF/K 16, RF/K 17, RF/K 26 and RK 1, RK 2, RK 4**

This shade strongly emphasizes the wood grain and is therefore more sensitive to possible color deviations, different hues and staining, which can occur due to different wood structures, restored resin bales and other manufacturing-related characteristics.

Wood is a natural product, so after such a surface treatment with a more pigmented primer, the different absorption of the wood due to its unique shape and structure creates a playful combination of colours.

This does not mean a reduction in the quality of the natural product wood nor that such colour differences can be a reason for a complaint about wood products.