



ALUMINIUM WINDOWS & ENTRANCE DOORS



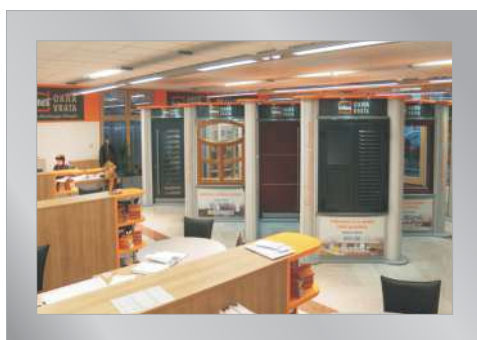
Custom wood windows and doors -

☐ Inles d.d. is a manufacturer of windows and doors with more than 75 years of experience.

☐ The legacy of Inles quality is built on hundreds of years of tradition in crafting woods.

☐ Inles products are known for quality and durability all over Europe. We are also known under the trade mark ISARHOLZ.

☐ Carefully selected materials and a technologically advanced manufacturing facility guarantee outstanding products for safety, durability, design and comfort.





☐ Inles offers only the highest quality windows and doors. We are recognized throughout the world. Most of our products we sell in the EU market and the markets of Asia, Africa, north and south America.

☐ We offer a variety of materials: wood, vinyl, aluminum or any combination of wood/aluminium, pvc/aluminium that will enhance the appearance and quality of your home.

☐ With Inles you can choose the materials to satisfy your taste.

*- Quality and advanced technology
for all architectural requirements.*



Aluminium windows



ALUMINIUM WINDOWS

Aluminium window, 75 mm thick, with a thermal insulation weatherstrip and thermal insulation foam in the aluminium profile. The product boasts superior structural stability, highly-secure standard hardware and good thermal performance. The narrow and stable frame and casement profile permits plenty of daylight into your room.

The outside and inside of the aluminium are divided using a thermal insulation weatherstrip, which prevents thermal bridges and thus the passage of cold and noise. The AWS 75.SI aluminium windows require almost no maintenance as the aluminium surfaces are powder-coated, making them highly durable and resistant to tough climates.

AWS 75.SI+
ASE 80.HI



75 ALU-WINDOWS

$$U_f = 1,3 \text{ W/m}^2\text{K}$$

$$U_w = 0,84 \text{ W/m}^2\text{K}$$

($U_g=0,5 \text{ W/m}^2\text{K}$, TGI black)



SCHÜCO

AWS 75.SI+

Three-chamber aluminium profiles 75 mm thick with an extra thermal isolation foam provide high stability, static security and good thermal insulation.

Narrow and stable frame allows plenty of light in your room.

Outer and inner aluminum are separated by thermal interface, which prevents the penetration of cold and noise.

Glazing seals in black are made of high quality and weather resistant materials.

PUR foam thermal insulation.

Wing aligned with the frame on the outside.

Wide range of colors from The ral color chart and color With a metallic appearance.

☐ two-coloured version inside - outside

☐ efficient sound insulation

☐ a powder-coated aluminium clads

RAL assembly

☐ Imitation wood

☐ ventilation elements

HEBESCHIEBETÜREN

The latest generation of highly thermally insulated sliding and lift-and-slide systems

Barrier-free, very easy to use and a slimline appearance – the high-insulation Schüco **ASE 80.HI** (High Insulated) sliding and lift-and-slide system offers elegant design solutions for sustainable, user-oriented architecture to passive house level.



ASE 80.HI - aluminum sliding door.

Thermal permeability of sliding doors, dim. 4500x 2385 mm, when the glazing is installed, $U_g=0.5 \text{ W/m}^2\text{K}$ and interglazing with Swisspacer spacers $U_w=0.89 \text{ W/m}^2\text{K}$.

SCHÜCO



COEFFICIENT REVIEW THERMAL

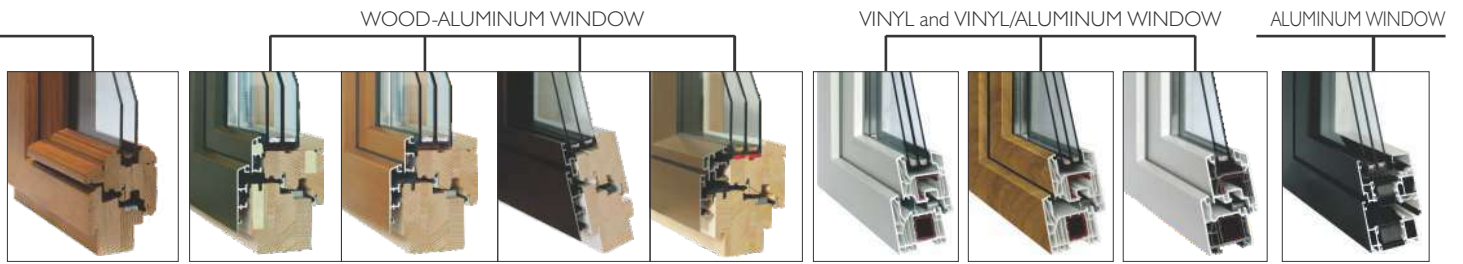


Glass Types with thermal transmission of heat flow U_g (W/m ² K)	Glass Structure	Thickness (mm)	Sound Transmission Rating (Rw dB)	Energy Transmission Rating g (%)	INO-92	INO-80 INO-92/80	INO-80 Soft A INO-80 Soft B	INO-80 Stil A INO-80 Stil B INO-80 Standard B	INO-68
					U_i (W/m ² K)				
					$U_i = 0,98$	$U_i = 1,2$	$U_i = 1,2$	$U_i = 1,2$	$U_i = 1,5$
Thermal insulating glass					U_w (W/m ² K)				
					TGI	TGI	TGI	TGI	TGI
UNITOP 1.1	4/16:4 Argon	24	32	65		1,2	1,2	1,2	1,3
UNITOP 1.0 ONE	4/16:4 Argon One	24	32	52		1,2	1,2	1,2	1,3
Three-layer thermal insulating glass					U_w (W/m ² K)				
					TGI	TGI	TGI	TGI	TGI
UNITOP 0,5	4:/18/4/18/:4 Argon	48	34	53	0,75				
UNITOP 0,5	4:/16/4/16/:4 Argon ONE	44	34	37	0,75	0,83	0,83	0,83	
UNITOP 0,6	4:/14/4/14/:4 Argon	40	32	53	0,82	0,89	0,89	0,89	
UNITOP 0,7	4:/10/4/12/:4 Argon One	34	32	37		0,96	0,96	0,96	1,1
UNITOP 0,7	4:/12/4/12/:4 Argon	36	32	53	0,88	0,96	0,96	0,96	1,1
Thermal and sound insulating glass					U_w (W/m ² K)				
					TGI	TGI	TGI	TGI	TGI
UNIPHON 38/36 0,7	6:/12/4/12/:4 Argon	38	36	52	0,88	0,96	0,96	0,96	
UNIPHON 46/39 0,6	6:/16/4/16/:4 Argon	46	39	52	0,88				
Safety glass					U_w (W/m ² K)				
					TGI	TGI	TGI	TGI	TGI
UNISAFE P4A (A3 besch.) 0,7	A3:/12/4/12/:4 Argon	42	37	48	0,88	0,96	0,96	0,96	

- Thermal and Acoustic insulation of windows depend upon the size and style of the window.
- Coefficient of thermal transmission U_w (W/m²K) is calculated for a 1230 x 1480 mm single sash window.
- For wood and wood-aluminum clad windows conifer wood (such as pine, fir and larch) was used.

TRANSMISSION FOR WINDOWS U_w

Wärmedurchgangskoeffizient des Rahmens nach EN ISO 10077-2



INO-68 Stil A INO-68 Stil B INO-68 Standard B	ISO-HA 80	INO-HA80	INO-HA80 MM INO-HA80 ML	INO-HA80 B INO-HA80 S INO-HA80 F	Living MD Living MD- Top Alu	Living AS Living AS- Top Alu	CT70 AS Classic CT70 AS Rondo CT70 AS Classic TA CT70 AS Rondo TA	AWS 75.SI+
---	-----------	----------	----------------------------	--	------------------------------------	------------------------------------	--	------------

Thermal transfer coefficient on frame window unit calculated according to EN ISO 10077-1

$U_f = 1,5$	$U_f = 0,92$	$U_f = 1,2$	$U_f = 1,2$	$U_f = 1,2$	$U_f = 1,0$	$U_f = 1,1$	$U_f = 1,3$	$U_f = 1,3$
-------------	--------------	-------------	-------------	-------------	-------------	-------------	-------------	-------------

Thermal transfer coefficient on complete window unit calculated according to EN ISO 10077-1

TGI	TGI	TGI	TGI	TGI	TGI	TGI	TGI	TGI
1,3					1,2	1,2	1,3	1,3
1,3					1,1	1,1	1,2	1,2

Thermal transfer coefficient on complete window unit calculated according to EN ISO 10077-1

TGI	TGI	TGI	TGI	TGI	TGI	TGI	TGI	TGI
	0,74	0,83	0,84	0,83	0,76	0,79		0,85
	0,74	0,83	0,84	0,83	0,76	0,79		0,85
	0,81	0,90	0,91	0,90	0,82	0,86	0,92	0,92
1,1					0,89	0,92	0,99	0,99
1,1					0,89	0,92	0,99	0,99

Thermal transfer coefficient on complete window unit calculated according to EN ISO 10077-1

TGI	TGI	TGI	TGI	TGI	TGI	TGI	TGI	TGI
					0,89	0,92	0,99	0,99
	0,81	0,90	0,91	0,90	0,82	0,86		0,92

Thermal transfer coefficient on complete window unit calculated according to EN ISO 10077-1

TGI	TGI	TGI	TGI	TGI	TGI	TGI	TGI	TGI
	0,87	0,97	0,97	0,97	0,89	0,92		0,99

U_w Thermal transfer coefficient on complete window
 TGI Spacers between glass made of vinyl

Aluminium doors



ALUMINIUM DOORS

Aluminium entrance doors are made of profiles supplied by the German manufacturer SCHÜCO. Rich design, superior security and durability characterise this top-quality door.

Apart from single-side and double-side doors, available features include sidelights, transoms, comprehensive entrance package including entry-phone, mailbox, automatic locking, remote unlocking etc.

SCHÜCO

Series
**TREND, DELUXE,
MODERN, REFINED,
CLASSIC**



ALUMINIUM

Selection of door models.



AT 911/AST 911



AT 924A/AST 924A



AT 100/AST 100, dekor Altholz (Stadelholz-1N)



AT 920



AT 100/AST 100A, Dekor Zement hell



AT 943



AD 801A/AST 801



AM 132A



AM 134B



AC 191/AST 191



AC 209A



AC 182A

DOORS

Selection of door models.



AT 100, New Forest
WOLFGANGSEE



AT 100, New Forest
MONDSEE



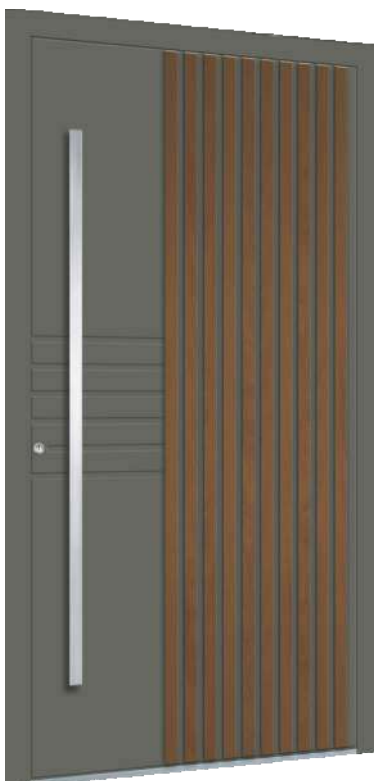
AT 100, New Forest
TRAUNSEE



AT 100, New Forest
ALTAUSSEE



AT 100, New Forest
ATTERSEE



Triumph

REFINED

The entrance doors are made in the ADS 95AK.SI system, with a double-sided overlapping leaf design. Aluminum slats are attached to the outer side of the door leaf, creating an attractive 3D appearance. The slats are available in seven wood finishes.



Canary



Levent

SYSTEM ADS.SI

- ❑ Frame profile is made from 75 or 95 mm thick aluminium and has straight or curved lines
- ❑ Casement profile is made from 85mm or 75mm thick aluminium. ADS 75B.SI flush execution on both sides
- ❑ Frame and casement profiles include a core thermal insulation weatherstrip that improves their thermal performance
- ❑ Hard PUR foam core is clad in aluminium and features superior thermal insulation performance
- ❑ In variants where the casements are covered on both sides and have no glazing, the thermal transmittance of the doors is $U_d = 0.81 \text{ W/m}^2\text{K}$, while in aluminium entrance doors with cladding on one side the U_d value is $1.2 \text{ W/m}^2\text{K}$.

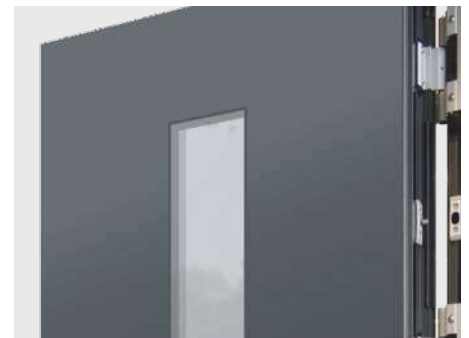


HARDWARE

- ❑ Quality three-dimensional adjustable hinges.
- ❑ 3 or 5-point locking of the leaf.
- ❑ Various options for opening: outside opening, a fingerprint system, electrical opening etc.

GLAZING

- ❑ You can choose from a variety of thermal and acoustic insulation and safety glass.
- ❑ A wide selection of ornaments and vitrages according to your wishes.
- ❑ Finishing the glass with various foils, glass accessories, sandblasting etc.



SURFACE TREATMENT

- ❑ Quality and environmentally friendly powder coating surfaces.
- ❑ You can choose from a wide range of standard colours, metallic colours,
- ❑ imitation wood dekors and colours from RAL colour chart.



VIEW FROM OUTSIDE



VIEW FROM THE INSIDE



Opening the door
with dLine Fingerprint



Opening the door
with a keypad

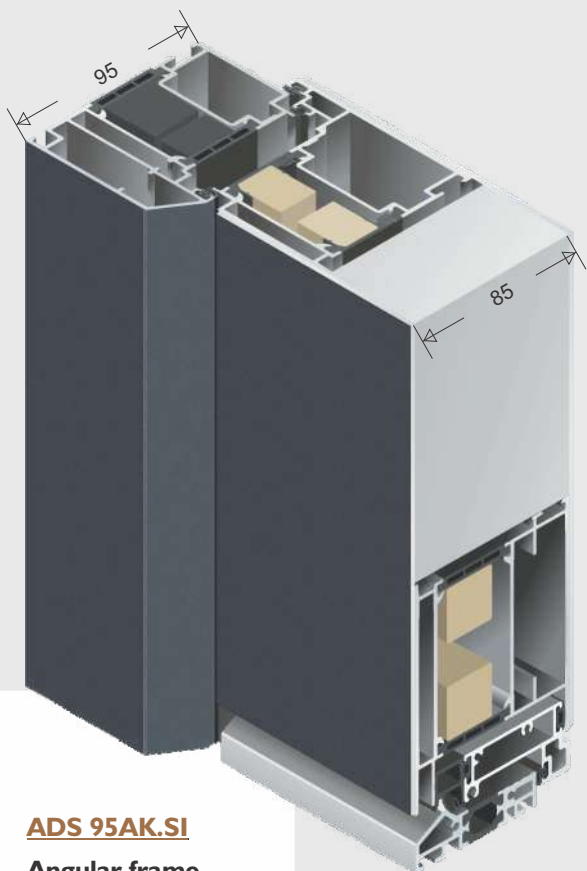


Handle with an integrated
LED light



LED light

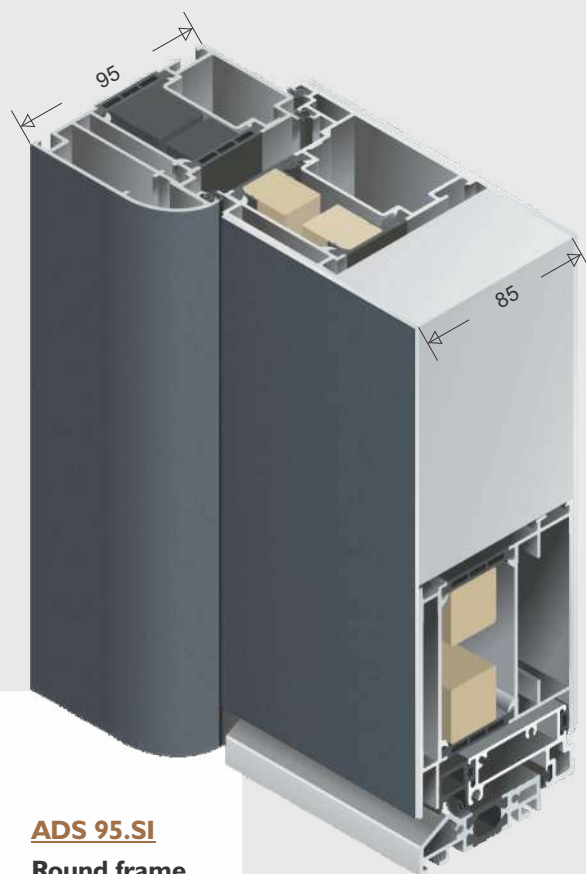
ALUMINIUM DOORS COLLECTION **INO-AH**



ADS 95AK.SI
Angular frame

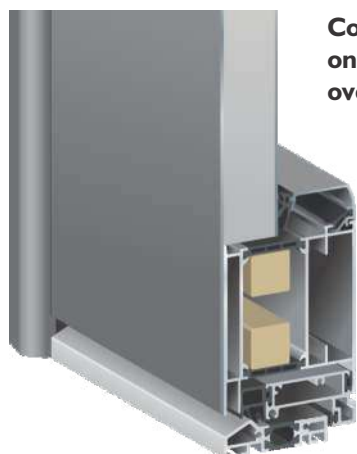
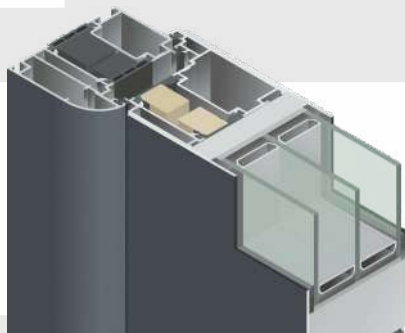
Coating of aluminum on both sides
overlap the door frame

Ud= 0,81 W/m²K
(full filling)



ADS 95.SI
Round frame

Triple glazing



Coating of aluminum
on outer side
overlap the door frame

Ud= 1,2 W/m²K
(full filling)



Version with visible wing

In these models the wings are visible both inside and outside.

They are available in all types of doors except for the Deluxe series.



ADS 75B.SI

Inside and outside
flush

Coating of aluminum on both sides
overlap the door frame

Ud = 0,81 W/m²K
(full filling)

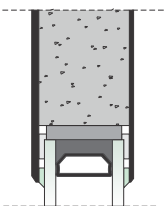


ADS 75.SI

flush on the outside

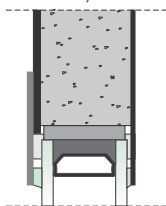
GLAZING SYSTEMS

OVR



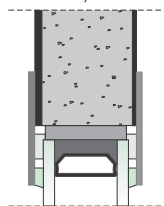
Series TREND

EVR by one side



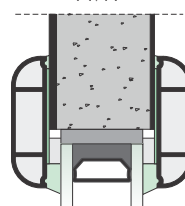
Series DELUXE
(Standardausführung)

EVR by two sides



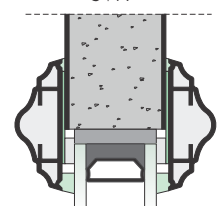
Series DELUXE

AVR



Series MODERN, CLASSIC

SVR



GLAZING

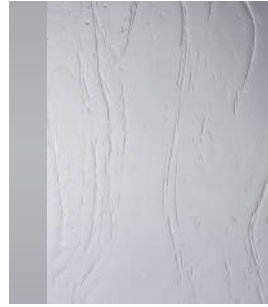
Ornamental glass



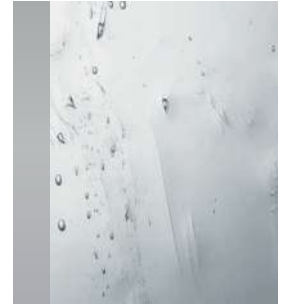
Kathedral K. white



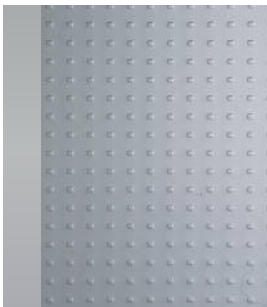
Chinchilla white



Gothic white



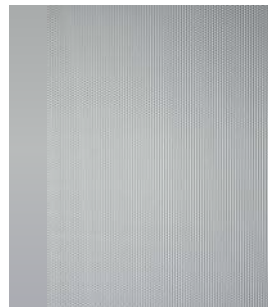
Altdeutsch K white



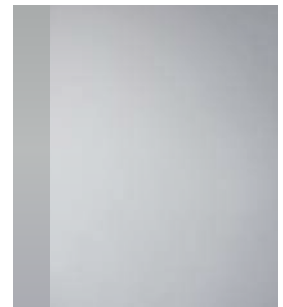
Mastercarre white



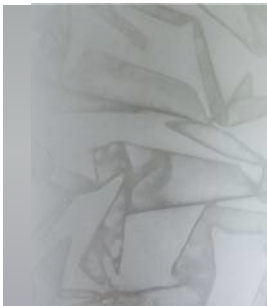
Masterligne white



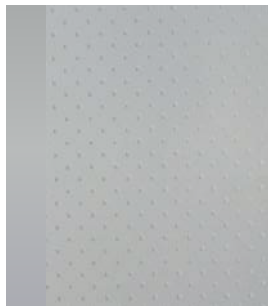
Masterpoint white



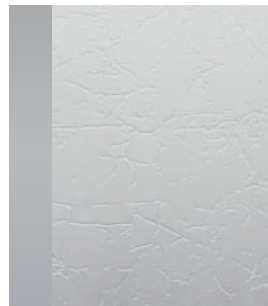
Satinato white



Silk white



Pave white

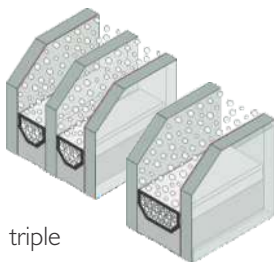


Uadi white



Nebulosa white

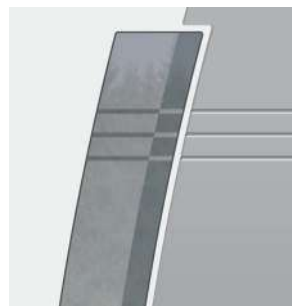
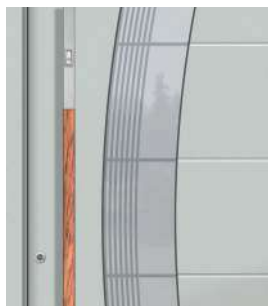
THERMAL INSULATING GLASS



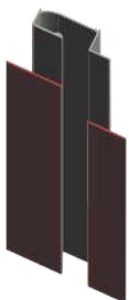
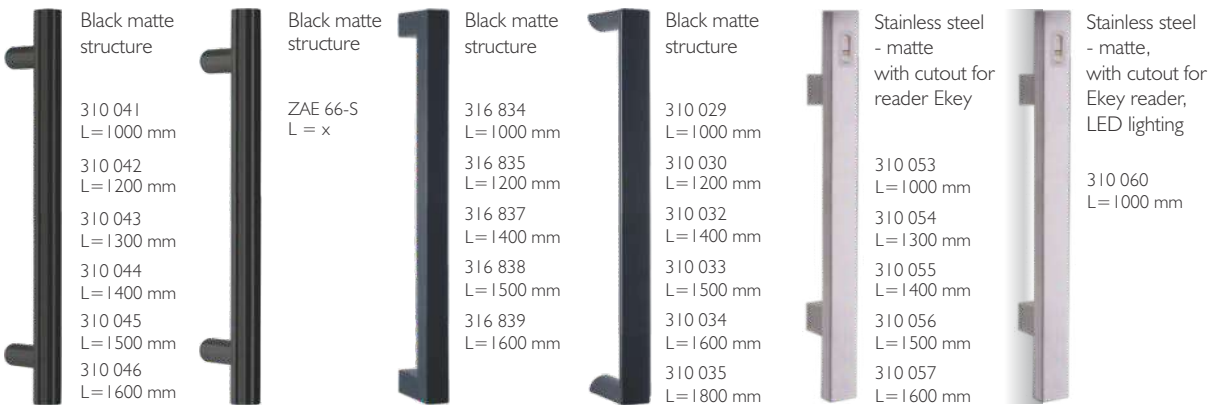
triple

twice

SANDBLASTED GLASS

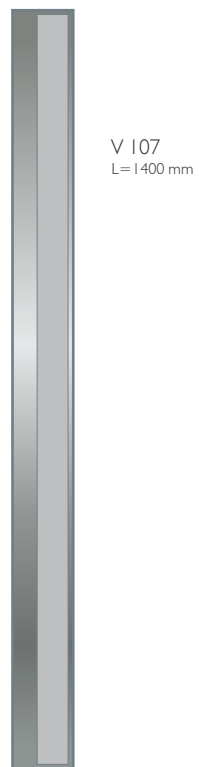


HANDLES



J 137 flush-mounted

Integrated handle strip -
RAL color; Visible gap = 45mm
Length in mm according to request





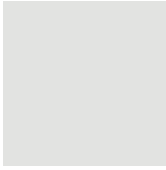
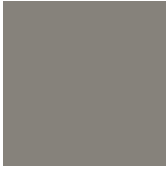

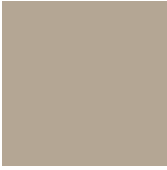


COLOUR CHART OF ALUMINIUM SURFACES

Colours of aluminium for wood and wood/aluminium windows and doors

MASTER COLLECTION (feinstruktur, metallic)



			
Night Grey Feinstruktur Metallic	Cast Iron Feinstruktur Metallic	Russet Copper Feinstruktur Metallic	Brown Feinstruktur Metallic
			
Artic Ice Feinstruktur Metallic	Granit Nature Feinstruktur Metallic	Volcanic Ash Feinstruktur Metallic	Precious Sand Feinstruktur Metallic

ANODIZING COLLECTION (matt, metallic)



			
CARBON NIGHT Matt Metallic	DARK COPPER Matt Metallic	SIMPLY COPPER Matt Metallic	ORIGINAL PLATINIUM Matt Metallic
			
GSPED 0 Matt	GSPED 1 Matt	GSPED 4 Matt	NOBLE BRONZE Matt Metallic

RAL FARBEN (matt, feinstruktur, metallic, glatt)



			
RAL 9016 Matt/ Feinstruktur	RAL 7035 Matt/ Feinstruktur	RAL 7004 Matt/ Feinstruktur	RAL 7016 Matt/ Feinstruktur
			
RAL 9006 Metallic glatt	RAL 9007 Metallic glatt	DB 703 Metallic glatt	DB 703 Metallic Feinstruktur

Imitation in stone



Dekor Zement hell



Dekor Beton dunkel

Imitation in wood

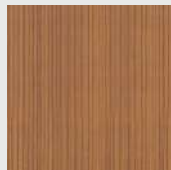
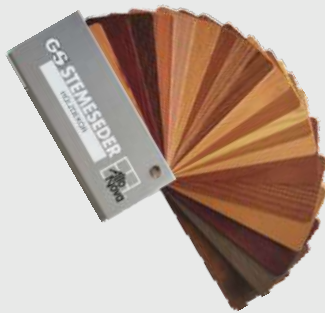


Dekor Altholz
(Stadelholz-1N)

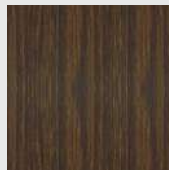


Dekor Stadelholz grau

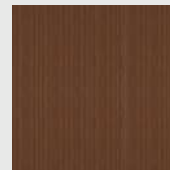
IMITATION
IN WOOD



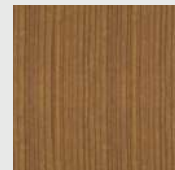
Douglas 7



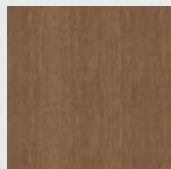
Eiche dunkel



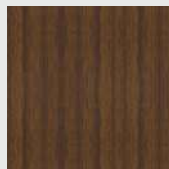
Kirsch 2



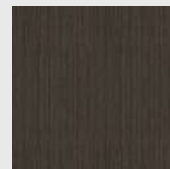
Kirsch 3



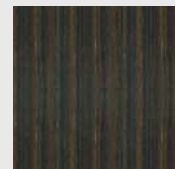
Golden Oak



Nuss 1



Wenge



Walnuss dunkel

Front-mounted roller shutters



Q.INTEGO

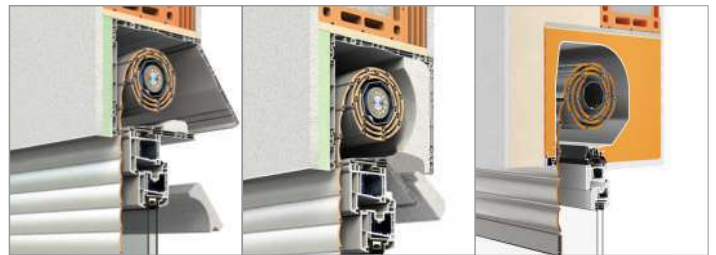
Top-mounted roller shutters



KARO



PENTO./E	RONDO./E	Q.INTEGO./E
----------	----------	-------------



RA.2	RA.3	PURO2.XR
------	------	----------



PENTO.X/.XE	RONDO.X/.XE	Q.INTEGO.X/.XE
S KOMARNIKOM		



KARO	KARO	PURO2.XR
optional INSECT SCREEN		with INSECT SCREEN

Insect screens



ROLLER

ROTATING FRAME



SASH FRAME

PLEATED SCREENS

HERO venetian blinds

FRONT-MOUNTED



HERO.1
mounted visibly

HERO.1
mounted out of sight

FRONT-MOUNTED
with INSECT SCREEN



HERO.1X
mounted visibly

HERO.1X
mounted out of sight

TOP-MOUNTED, optional INSECT SCREEN



HERO.5 - PURO 2.XR
roller shutter housing

Textile screens
OLIMP



OLIMP.I
mounted visibly



OLIMP.IX
mounted visibly with insect screen



OLIMP.I
mounted out of sight



OLIMP.IX
mounted out of sight with
insect screen

Wood shutters



Type 101/101A

Type 102

Type 103



Type 104A

Type 104AF

Aluminium shutters



Type A101/A101A



Type A103

Type A104F

French balcony



Handles with LED illumination



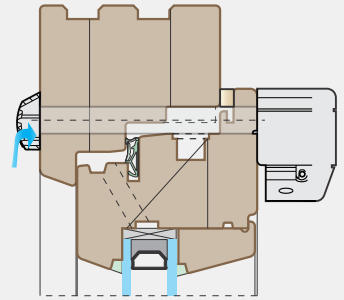
- round and square handles with integrated led lighting

Ventilation
KZ42



Ventilation
KZ36a

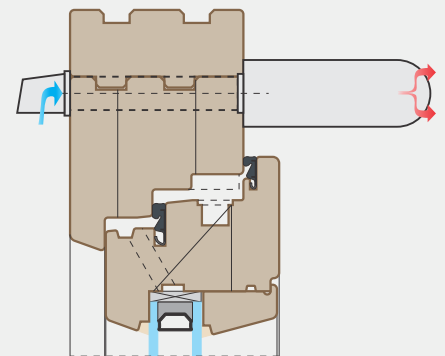
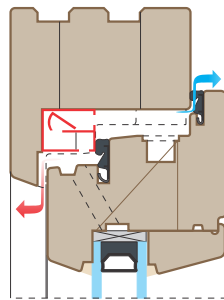
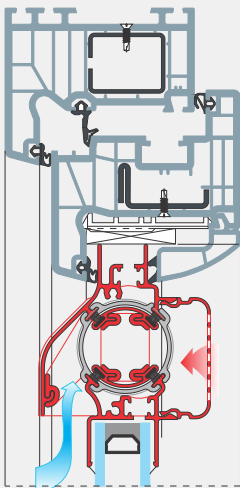
Ventilation
KZ36b



Ventilation
Kz41

Ventilation REGEL-AIR
KZ41a

Ventilation
KZ35a



Inles d.d.

SI - 1310 Ribnica, Kolodvorska 22
tel.: 01 8377 100, fax: 01 8377 333

e-mail: info@inles.si



www.inles.si