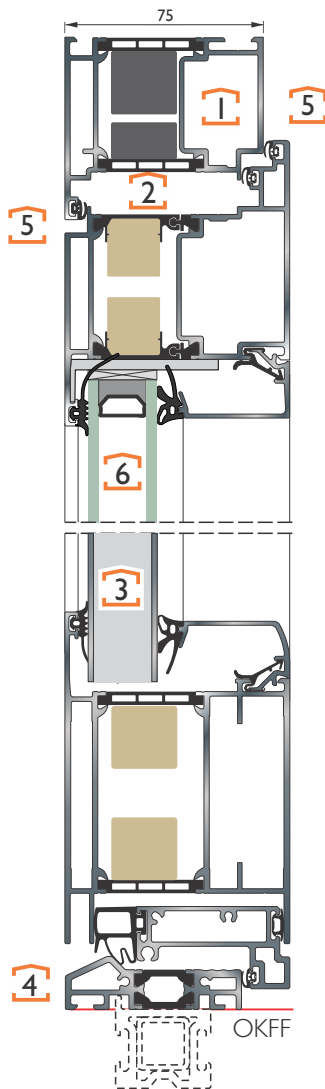
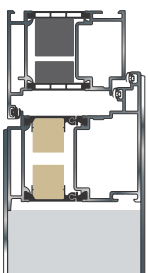


ADS 75.SI

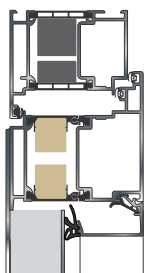
doors - vertical section



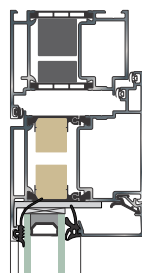
- 1 CONSTRUCTION**
The aluminium frame profile is 75 mm thick, and the sash profile is 85 mm thick. Additional thermal insulation foam ensures static stability, high security, and excellent thermal insulation.
- 2 THERMAL FOAM**
In the middle of the frame profiles is thermal foam, which improves the thermal characteristics of the profile.
- 3 ALUMINIUM FILLINGS**
with the core made of hard polyurethane foam has very good thermal characteristics.
- 4 HARDWARE**
Quality three-dimensional adjustable hinges.
3 or 5-point locking of the leaf.
Various options for opening: outside opening, a fingerprint system,
- 4 INSULATING TRESHOLD**
- 5 THREE SEALS** ensure optimal tightness.
- 6 GLAZING**
You can choose from a variety of thermal and acoustic insulated and safety glass. A wide selection of ornaments and vitrages according to your wishes. Finishing the glass with various foils, glass accessories, sandblasting etc.
- ALUMINIUM SURFACES**
A powder-coated aluminum clads are environmentally friendly and provides excellent quality and durability of coloured surfaces. A wide range of colors from the RAL color chart, imitation wood decors and colors with a metallic appearance.



coating of aluminum on both sides overlap the door frame



coating of aluminum on outer side overlap the door frame



visible door frame - inside and outside

Double-sided overlay door leaf

ADS 75.SI

Ud = 0,81 W/m²K

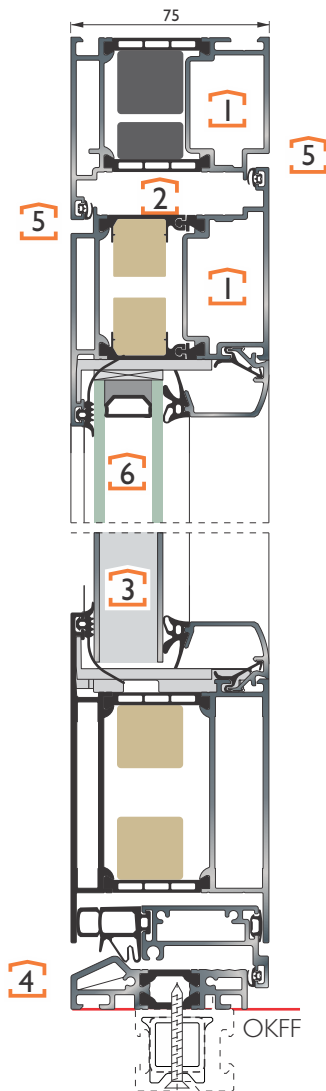
(Ud value applies to a door size of 1230 × 2180 mm, without a glass cut-out)

Ud = 0,84 W/m²K

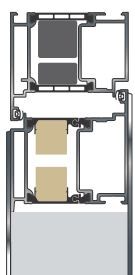
(Ud value applies to a door size of 1100 × 2100 mm, without a glass cut-out)

ADS 75B.SI

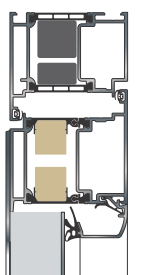
doors - vertical section



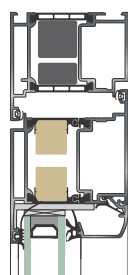
- 1** KONSTRUCTION
Aluminium profile frame thickness 75mm with straight lines.
- 2** THERMAL FOAM
In the middle of the frame profiles is thermal foam, which improves the thermal characteristics of the profile.
- 3** ALUMINIUM FILLINGS
with the core made of hard polyurethane foam has very good thermal characteristics.
- 4** HARDWARE
Quality three-dimensional adjustable hinges.
3 or 5-point locking of the leaf.
Various options for opening: outside opening, a fingerprint system,
- 4** INSULATING TRESHOLD
- 5** THREE SEALS ensure optimal tightness.
- 6** GLAZING
You can choose from a variety of thermal and acoustic insulated and safety glass.
A wide selection of ornaments and vitrages according to your wishes.
Finishing the glass with various foils, glass accessories, sandblasting etc.
- 4** ALUMINIUM SURFACES
A powder-coated aluminum clads are environmentally friendly and provides excellent quality and durability of coloured surfaces. A wide range of colors from the RAL color chart, imitation wood decors and colors with a metallic appearance.



coating of aluminum
on both sides overlap
the door frame



coating of aluminum
on outer side overlap
the door frame



visible door frame -
inside and outside

Double-sided overlay door leaf

ADS 75B.SI

Ud = 0,83 W/m²K

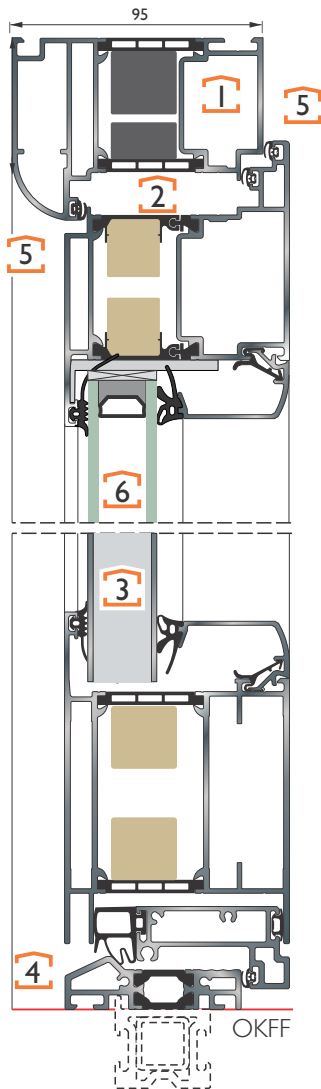
(Ud value applies to a door size of 1230 × 2180 mm, without a glass cut-out)

Ud = 0,87 W/m²K

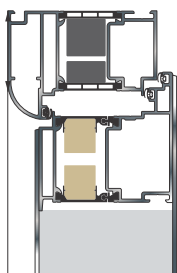
(Ud value applies to a door size of 1100 × 2100 mm, without a glass cut-out)

ADS 95.SI

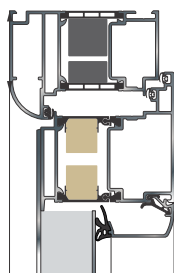
doors - vertical section



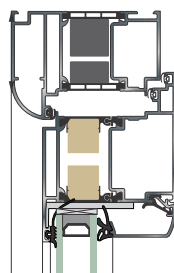
- 1** KONSTRUCTION
Aluminium profile frame thickness 95 mm with curved lines.
- 2** THERMAL FOAM
In the middle of the frame profiles is thermal foam, which improves the thermal characteristics of the profile.
- 3** ALUMINIUM FILLINGS
with the core made of hard polyurethane foam has very good thermal characteristics.
- 4** INSULATING TRESHOLD
Quality three-dimensional adjustable hinges.
3 or 5-point locking of the leaf.
Various options for opening: outside opening, a fingerprint system,
- 5** THREE SEALS ensure optimal tightness.
- 6** GLAZING
You can choose from a variety of thermal and acoustic insulated and safety glass.
A wide selection of ornaments and vitrages according to your wishes.
Finishing the glass with various foils, glass accessories, sandblasting etc.
- ALUMINIUM SURFACES**
A powder-coated aluminum clads are environmentally friendly and provides excellent quality and durability of coloured surfaces. A wide range of colors from the RAL color chart, imitation wood decors and colors with a metallic appearance.



coating of aluminum
on both sides overlap
the door frame



coating of aluminum
on outer side overlap
the door frame



visible door frame -
inside and outside

Double-sided overlay door leaf

ADS 95.SI

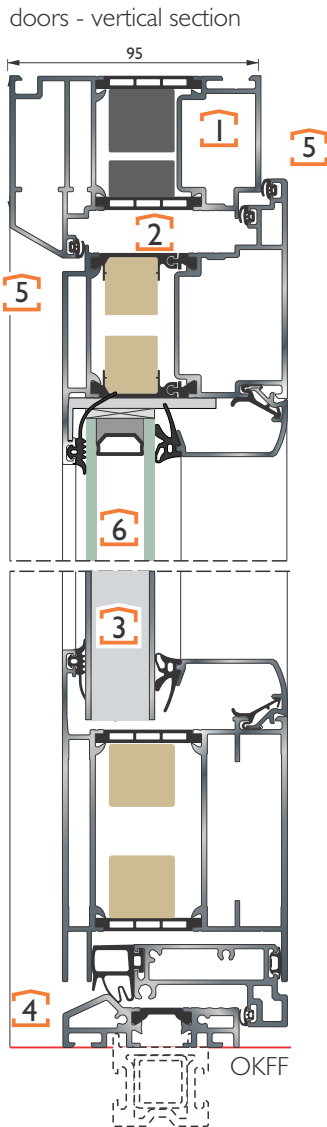
Ud = 0,81 W/m²K

(Ud value applies to a door size of 1230 × 2180 mm, without a glass cut-out)

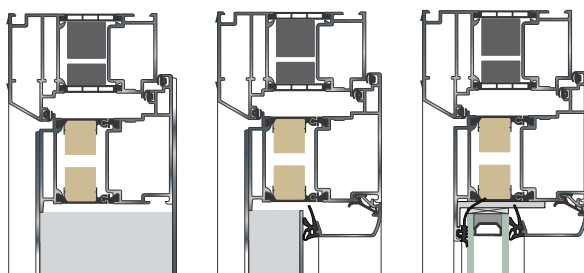
Ud = 0,84 W/m²K

(Ud value applies to a door size of 1100 × 2100 mm, without a glass cut-out)

ADS 95AK.SI



- 1** KONSTRUCTION
Aluminium profile frame thickness 95 mm .
- 2** THERMAL FOAM
In the middle of the frame profiles is thermal foam, which improves the thermal characteristics of the profile.
- 3** ALUMINIUM FILLINGS
with the core made of hard polyurethane foam has very good thermal characteristics.
- 4** HARDWARE
Quality three-dimensional adjustable hinges.
3 or 5-point locking of the leaf.
Various options for opening: outside opening, a fingerprint system,
- 4** INSULATING TRESHOLD
- 5** THREE SEALS ensure optimal tightness.
- 6** GLAZING
You can choose from a variety of thermal and acoustic insulated and safety glass.
A wide selection of ornaments and vitrages according to your wishes.
Finishing the glass with various foils, glass accessories, sandblasting etc.
- ALUMINIUM SURFACES**
A powder-coated aluminum clads are environmentally friendly and provides excellent quality and durability of coloured surfaces. A wide range of colors from the RAL color chart, imitation wood decors and colors with a metallic appearance.



coating of aluminum
on both sides overlap
the door frame

coating of aluminum
on outer side overlap
the door frame

visible door frame -
inside and outside

Double-sided overlay door leaf

ADS 95AK.SI

Ud = 0,81 W/m²K

(Ud value applies to a door size of 1230 × 2180 mm, without a glass cut-out)

Ud = 0,84 W/m²K

(Ud value applies to a door size of 1100 × 2100 mm, without a glass cut-out)